



Richmond Way, Maidstone, Kent, ME15 6BW
Guide Price £325,000

*****GUIDE PRICE £325,000 - £350,000***NO FORWARD CHAIN*** THREE BEDROOM HOME SITUATED IN A SOUGHT AFTER RESIDENTIAL DEVELOPMENT**

Page & Wells are pleased to offer this three-bedroom semi-detached family home, located in a highly desirable area of Loose, just three miles south of Maidstone town centre. The property is conveniently situated within walking distance of well-regarded local primary schools, a post office, Sainsbury's, and the scenic walking routes of the Loose Valley conservation area.

This home provides spacious and versatile living space with scope for further enhancement. The ground floor comprises an entrance porch, a lounge/diner, and a fitted kitchen. Upstairs, there are two double bedrooms and a single bedroom, all served by a family bathroom.

Outside, the property benefits from generous side access leading to a detached garage. The rear garden is mainly laid to lawn with a patio area for seating and well-stocked borders. With no forward chain, this fantastic property is expected to attract high interest. Contact Page & Wells Loose Office today to arrange a viewing and avoid disappointment.



GROUND FLOOR

Porch

Lounge/Dining Area 22'7" x 15'9" (6.90m x 4.82m)

Kitchen 10'4" x 7'2" (3.17m x 2.19m)

Conservatory 10'9" x 7'9" (3.30m x 2.37m)

FIRST FLOOR

Bedroom 1 11'10" x 9'11" (3.62m x 3.03m)

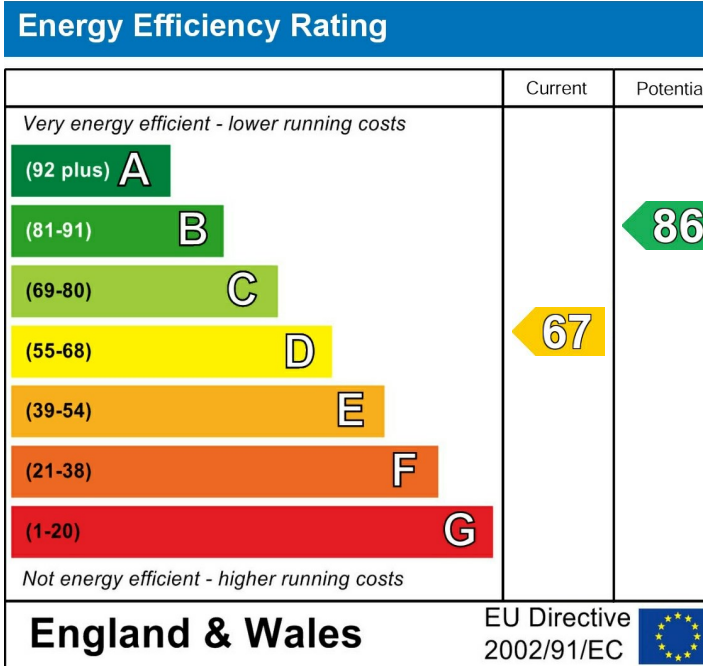
Bedroom 2 10'5" x 8'3" (3.19m x 2.53m)

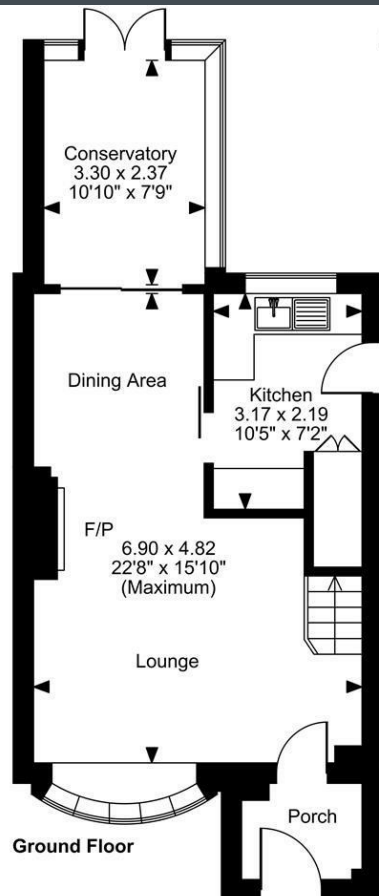
Bedroom 3 7'2" x 6'11" (2.20m x 2.12m)

Bathroom

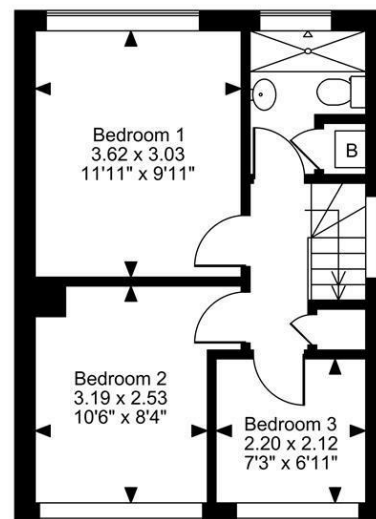
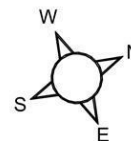
EXTERNALLY

Garage 17'2" x 8'7" (5.25m x 2.63m)

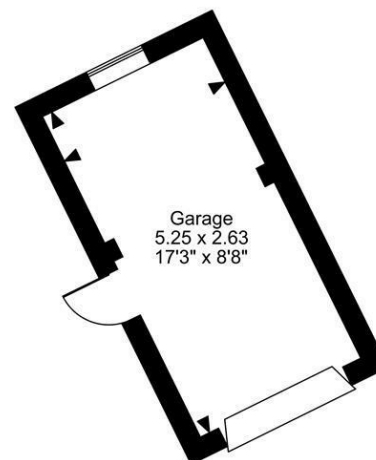




Richmond Way, Maidstone, Kent
Approximate Gross Internal Area
Main House = 842 Sq Ft/78 Sq M
Garage = 149 Sq Ft/14 Sq M
Total = 991 Sq Ft/92 Sq M



First Floor



FOR ILLUSTRATIVE PURPOSES ONLY - NOT TO SCALE

The position & size of doors, windows, appliances and other features are approximate only.

© ehouse. Unauthorised reproduction prohibited. Drawing ref. dig/8636349/SS

